



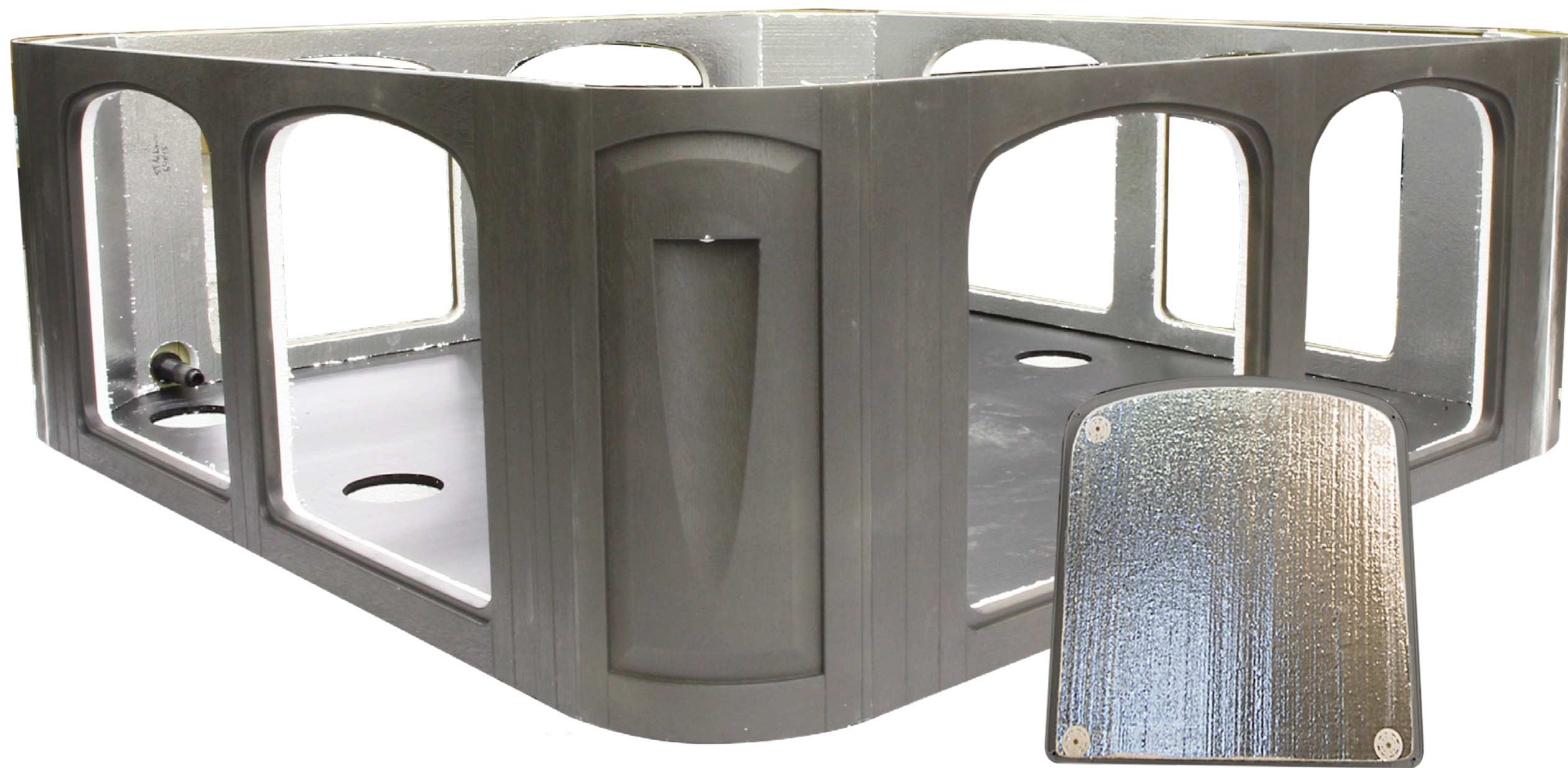
Clearwater Spas

SALES HANDBOOK |

RTB (Reflective Thermal Barrier) Insulation

THE MOST ENERGY EFFICIENT INSULATION SYSTEM

cabinet walls, door panels, floor system



- Foil bonded foam reflects & recycles heat keeping the cabinet warm & dry
- Removable door panels allow for quick servicing that saves time and cost.
- Our EPS rigid foam panels feature a non-toxic additive that deters insects, bees, wasps, mice and rats.

Clearwater Spas

SALES HANDBOOK |

RIM (Reaction Injection Molding) Cabinets

STRONGEST. LONGEST LASTING. 20 YEAR WARRANTY.

Most durable cabinet in the industry. Available in gray, brown, and black.



- Paintable - match the shade of your house or trim
- Strongest - Tested by running over a corner piece with an SUV without any damage.
- Award Winning "Innovation of the Year" by the Bayer Science Corporation.

Clearwater Spas

SALES HANDBOOK |

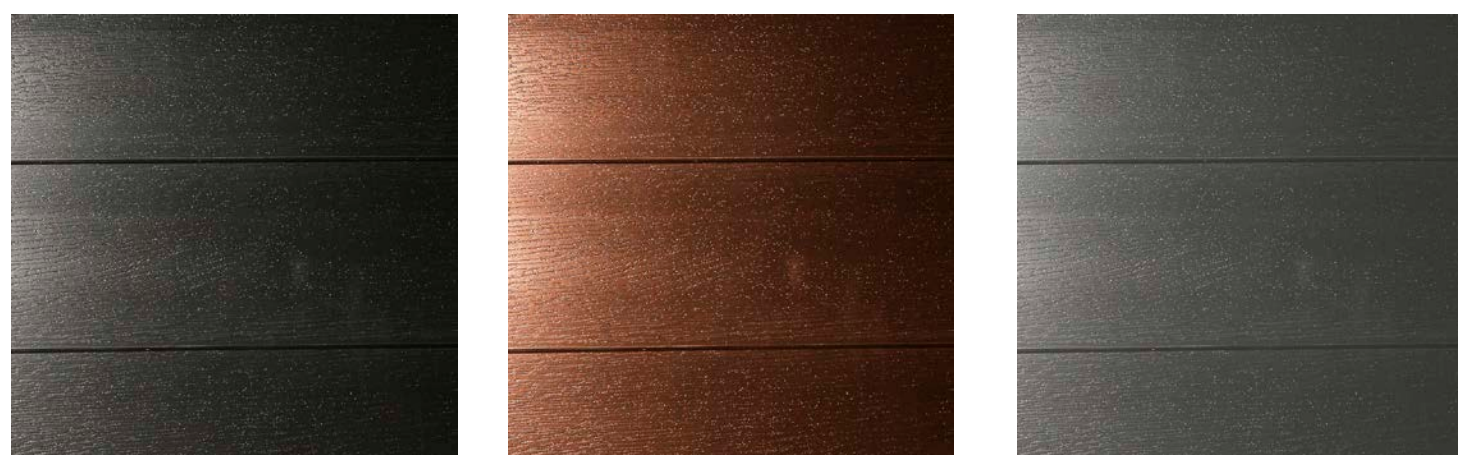
DuraTech™ Cabinets

ULTRA HIGH STYLE. EASY TO MAINTAIN.

Available in gray, brown, and black.



- Interlocking synthetic panels will not fade and can be washed with soapy water to keep them free of dust and grime.
- Energy efficient RTB insulation reflects and recycles heat within the cabinet keeping it warm and dry.



Clearwater Spas

SALES HANDBOOK |

Cedar Cabinets - Natural, Aromatic, Lasting

BEAUTIFUL, WESTERN RED CEDAR CABINETS

From British Columbia, Canada

Certified to the Sustainable Forest Management System (SFM) and the Canadian Standards Association (CSA)



- Distinctive and naturally stylish
- Stable and resists warping and rotting
- Durable and long lasting through harsh weather conditions
- Termite and insect resistant
- Natural thermal insulation and sound control
- Comes in 2 colors: natural and driftwood

Clearwater Spas

SALES HANDBOOK |

Insulated Durafloor™ Base System

BEST SPA BASE IN THE INDUSTRY

Fully insulated. Waterproof. A Clearwater Exclusive.



- Base is silicone sealed and screw bonded to our cabinets. Base raises spa off the ground to further protect it from the elements.
- Our Durafloor™ 100% recycled ABS base is vacuum formed from a single sheet for durability, strength and a watertight seal.

Clearwater Spas

SALES HANDBOOK |

PVC Column Support System

FRAME FREE SYSTEM

Our PVC column supports carry all the load.



- **STRENGTH:** Our PVC columns support over 10,000 pounds (5 tons).
- **DURABILITY:** Our PVC columns will not rot, mold, rust or let you down.
- **ANTI PEST:** Our PVC columns do not attract rodents, bees, wasps or insects.
- **BEST WARRANTY:** Our 20-year structural warranty is the best in the industry.

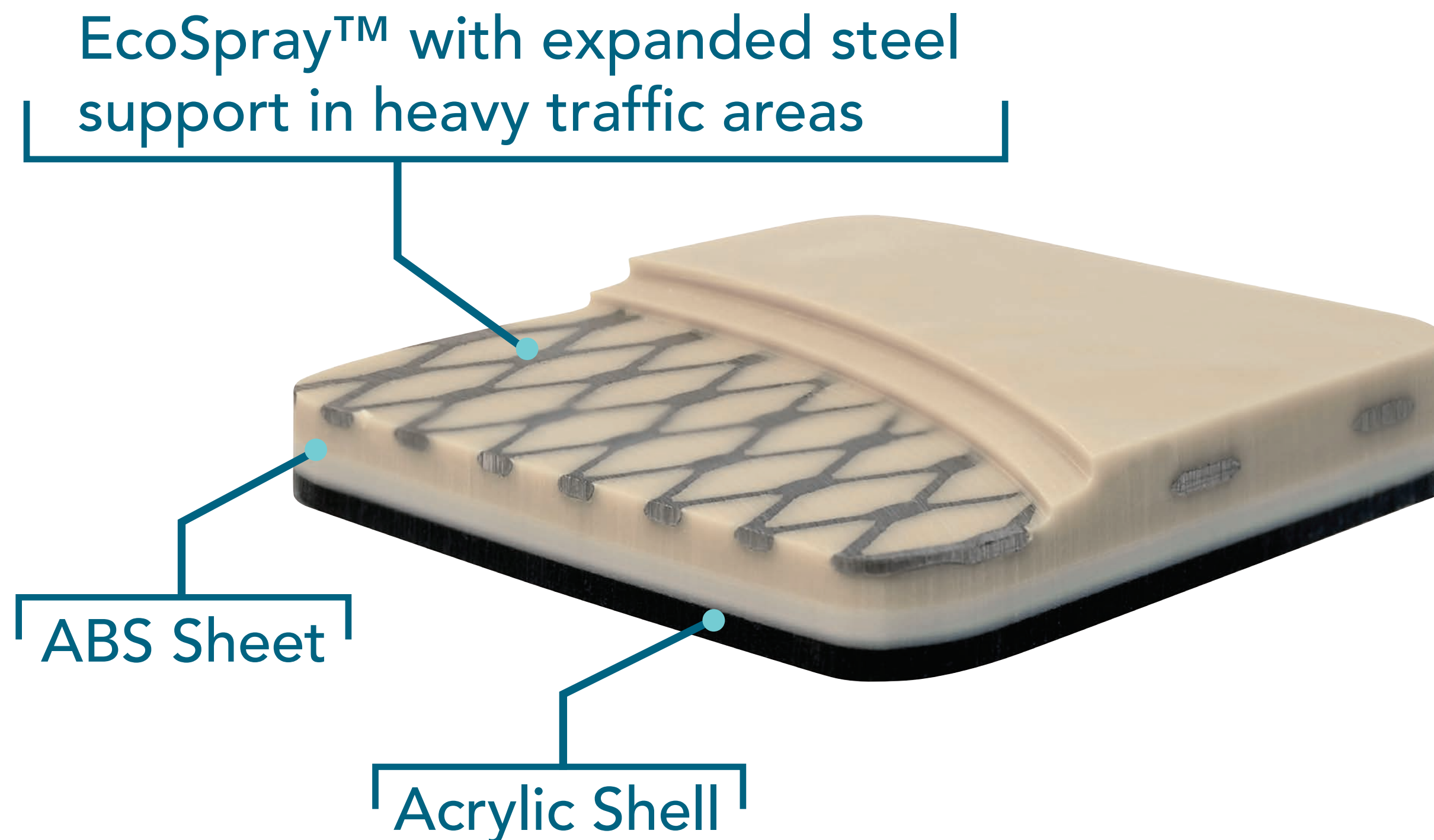
Clearwater Spas

SALES HANDBOOK |

Acrylic EcoSpray™ Spa Shell

STRONGEST. ECO-FRIENDLY. TRIPLE-LAYERED SHELLS.

Industry leading spa shell strength. Backed by a 20-year warranty.



- **Twice the strength.** Our ABS sheet + the acrylic sheet is twice as strong as competitors only using an acrylic sheet.
- **V.O.C.-free. | Clean air factory.** Our EcoSpray™ shell strengthening material does not produce any volatile organic compounds (V.O.C.'s) or air pollutants.

Clearwater Spas

SALES HANDBOOK |

Whisper Flow Plumbing

HYDROTHERAPY MASSAGE PERFECTION

Efficient, powerful and quiet water flow

- Sweeping 90° & 45° elbows = fast water flow.
- Manifold plumbing= water flow balancing.
- Powerful, 56-frame therapy pumps are secured to motor mount plates for stability.
- Powerful pool duty pumps=besttherapy.
- Quiet, 24-hour circulation pump filters 30 gallons of spa water per minute through filters for clean spa water.
- Stainless steel clamps are pneumatically compressed to water tight calibrations.
- Individual raised motor mounts, reinforced with RTB insulation and motor mount plates for stability.
- Water shut-off valves for easy pump servicing, eliminate the need to drain the water from the spa.



Clearwater Spas

SALES HANDBOOK |

Double Filtration System

100% SELF-CLEANING WATER SYSTEM

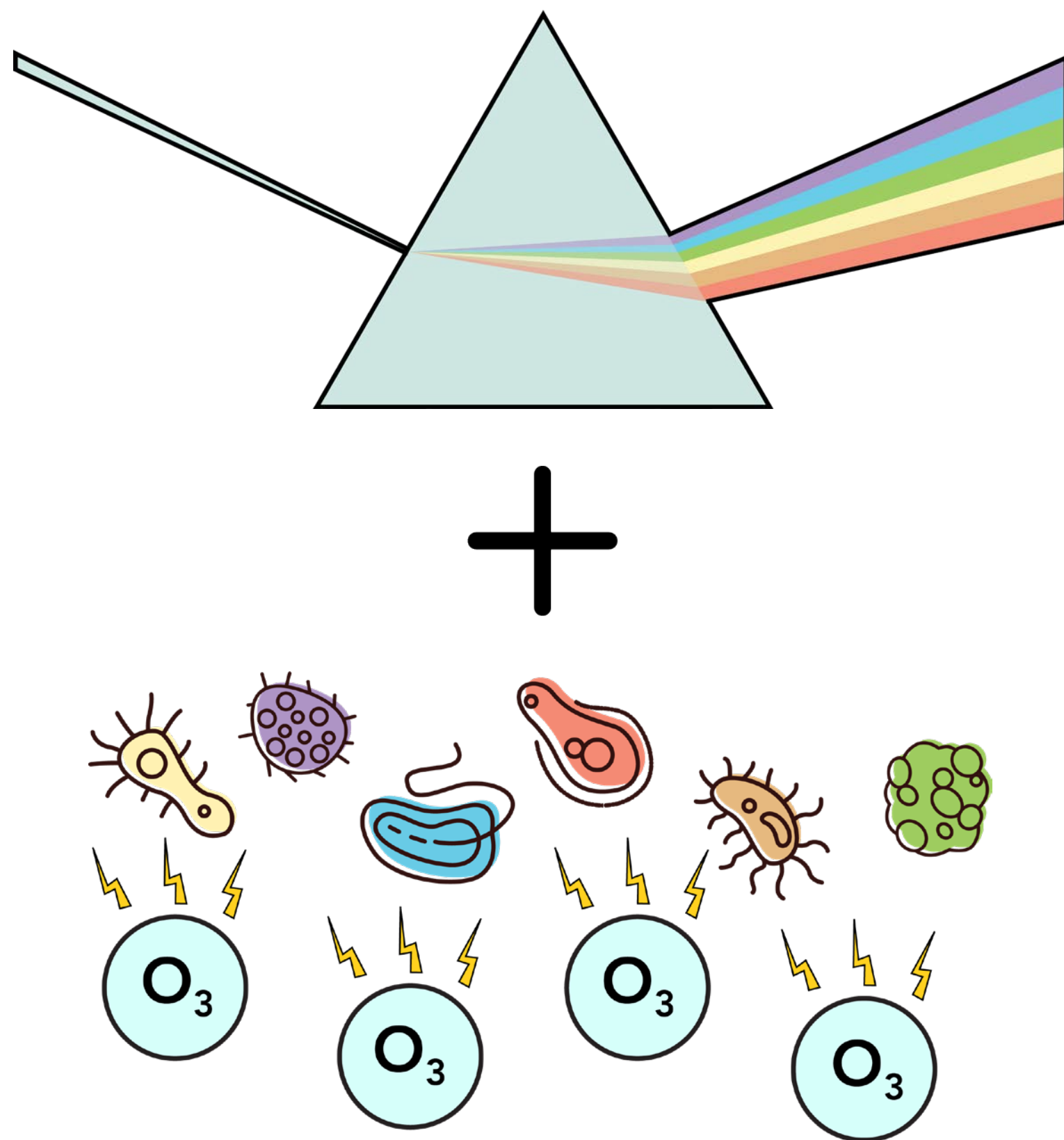
Double pumps and double filters provide twice the cleaning power. Our system cleans the entire body of water, surface to floor, circulating more than 50,000 gallons of water per day!



UVC + Ozone Purification System

PURITY SYSTEM USING LIGHT & ENERGETIC OXYGEN

Destroys bacteria, viruses, algae, yeasts, unused oxidizers and other contaminants.



- **UVC light kills the micro-organisms.** UVC refers to the ultraviolet light with wavelengths between 200 – 280 nanometers (nm). Light in the UVC wavelength can be used for disinfecting water and destroying harmful micro-organisms.
- **Ozone oxidizes (eliminates) the micro-organisms.** Ozone, sometimes referred to as energetic oxygen, is a powerful oxidizer of contaminants in water. Ozone greatly reduces the need for high chemical doses, helps destroy bacteria and reduces cost.
- Our **Double Filtration System** picks up from there and ensures more than 50,000 gallons of water per day are moved quickly through two pumps and filtered through two polyester filters.

Clearwater Spas

SALES HANDBOOK |

Clear Balance Conditioner System™

MAGNETIC WATER TREATMENT CLEANS & CONDITIONS

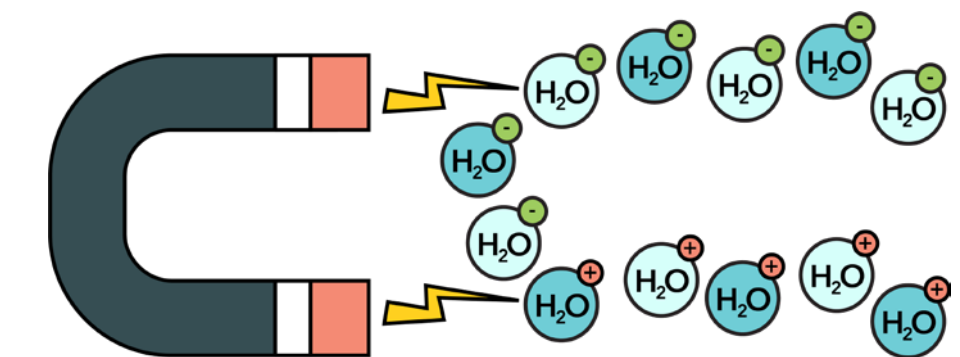
Our CBCS™ cleans and conditions water using magnets to organize and positively charge molecules, which binds them together, to be removed by the filter system more effectively.



How it works:

Water passes by the powerful, highly focused magnetic field, the magnetizer does two things:

1. Polarizes (organizes) molecules.
2. Gives water a net positive (+) charge.



This positive charge binds or clumps particles such as dirt, skin cells, body and tanning oils into larger particles (ion floc clusters) which are more effectively filtered out by the filtration system.

Features and benefits:

- Reduces chemical usage and costs.
- Removes scale build up (rough build-up upon the water surface, seats and walls that feel like sandpaper).
- Helps removal of water line ring caused by body oils, cosmetics and lotion residues.
- Balances, or stabilizes, pH levels.
- Improves filter performance.
- Makes the water feel silky smooth.
- Eliminates mineral and dissolved metal build up helping to prolong equipment.
- Minimizes spa maintenance.

Clearwater Spas

SALES HANDBOOK |

Adjustable Jets - Customize your Therapy

JET MASSAGE THERAPY PUTS YOU IN CONTROL

Fully adjustable. Interchangeable with same sizes.



HIGH PRESSURE DIRECTIONAL JETS

Focuses therapy on specific parts of the body like arms legs, and back



SINGLE SPINNER JET

High pressure circulating massage



TRI-SWIRL JETS

Pulsating hydrotherpay massage



DUO SPINNER JETS

Circulating hydrotherapy massage



VOLCANO JET

Ultimate high pressure foot massage

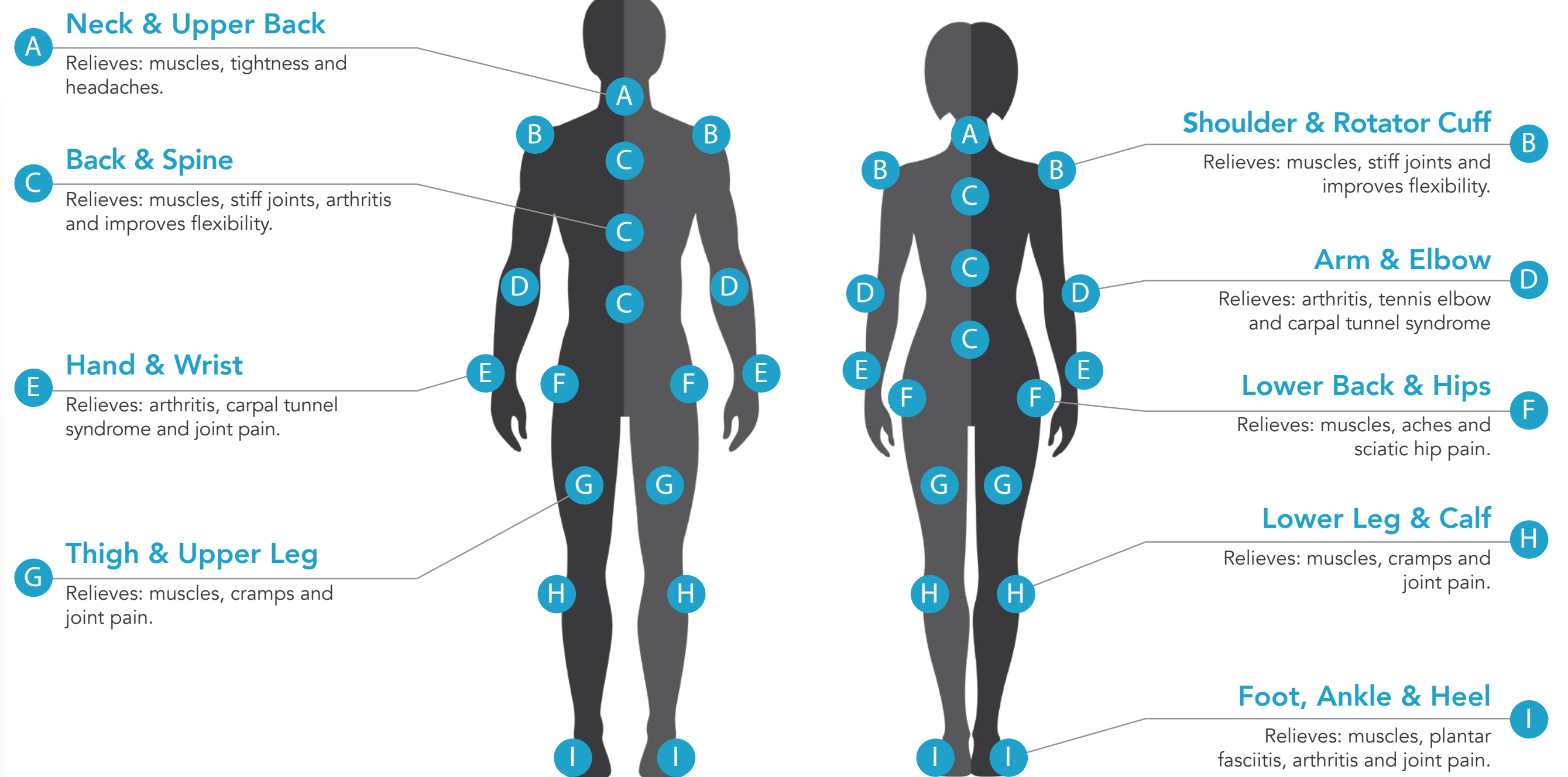
Clearwater Spas

SALES HANDBOOK |

Best Hydrotherapy Massage

OUR MASSAGE JETS HAVE YOU COVERED.

Interchangeable. Adjustable. Powerful. More jets than the competition!



Relax Better. Sleep Better. Feel Better. Live Better.

Clearwater Spas

SALES HANDBOOK

Most Comfortable Spa Seating

SCULPTED TO ERGONOMIC PERFECTION

Hand crafted molds are designed by artisans and engineers to fit and support your every contour.

1. Lounge Seat

Our lounge seat is ergonomically designed to fit your needs in the most comfortable way. It targets areas such as your shoulders, back, legs and feet.

2. Therapeutic Seat

Our therapeutic seats are designed to offer a different kind of hydrotherapy. They use a variety of jet placements in order to make a quantifiable difference.

3. Cool Down Seat

The cool down seat allows you take a break from the heat of the water but still enjoy your spa and the company of your family and friends.



Clearwater Spas

SALES HANDBOOK |

Resort Series

THE ULTIMATE, LUXURIOUS SPA SERIES



ORLANDO

4 pumps | 107 jets | 6 person | 92.5" x 92.5" x 39.5"
Pumps: 4 therapy | 1 circulating



MONACO

4 pumps | 98 jets | 5 person | 92.5" x 92.5" x 39.5"
Pumps: 4 therapy | 1 circulating



CABO

4 pumps | 91 jets | 5 person | 84" x 84" x 34"
Pumps: 4 therapy | 1 circulating



RIO

4 pumps | 73 jets | 5 person | 84" x 76" x 34"
Pumps: 4 therapy | 1 circulating



Bistro Table



Water Features



RIM Cabinets



Touchscreen Control



More Jets



Water Controls



More Pumps

Clearwater Spas

SALES HANDBOOK |

Beachcraft Series

THE BEST OF LUXURY AND THERAPY



TRADITION

3 pumps | 67 jets | 6 person | 92.5" x 92.5" x 39.5"
Pumps: 3 therapy | 1 circulating

PEARL ISLAND

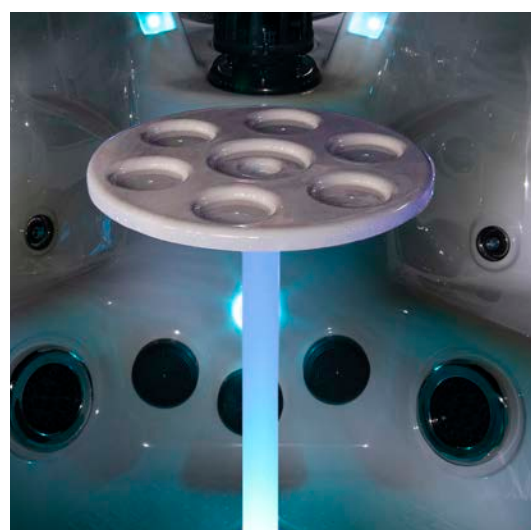
3 pumps | 66 jets | 5 person | 92.5" x 92.5" x 39.5"
Pumps: 3 therapy | 1 circulating

MYRTLE BEACH

3 pumps | 62 jets | 6 person | 84" x 84" x 34"
Pumps: 3 therapy | 1 circulating

ST. ANDREW

3 pumps | 66 jets | 5 person | 84" x 84" x 34"
Pumps: 3 therapy | 1 circulating



Bistro Table



Water Features



RIM Cabinets



Touchscreen Control



More Jets



Ergonomic Seating



More Pumps

Clearwater Spas

SALES HANDBOOK |

Northwest Series

GREAT VALUE & THERAPY



BROADMOOR

2 pumps | 51 jets | 6 person | 92.5" x 92.5" x 39.5"
Pumps: 2 therapy | 1 circulating

CONCORDIA

2 pumps | 51 jets | 7 person | 92.5" x 92.5" x 39.5"
Pumps: 2 therapy | 1 circulating

TWIN PEAKS

2 pumps | 57 jets | 5 person | 92.5" x 84" x 34.5"
Pumps: 2 therapy | 1 circulating

LIBERTY LAKE

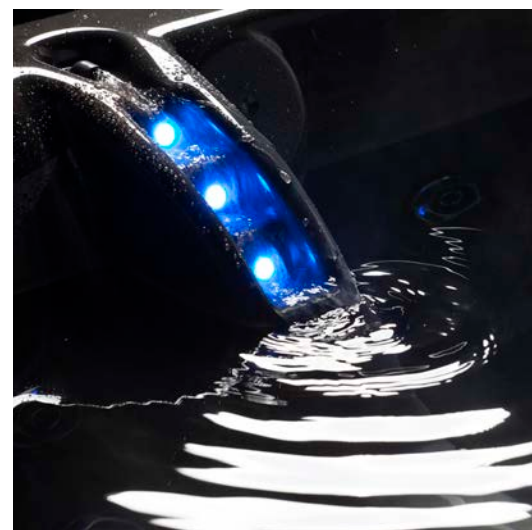
2 pumps | 51 jets | 5 person | 84" x 84" x 34"
Pumps: 2 therapy | 1 circulating

FAIRVIEW

2 pumps | 51 jets | 6 person | 84" x 84" x 34"
Pumps: 2 therapy | 1 circulating



LED Lights



Water Features



DuraTech Cabinets



Touchscreen Control



Foot Jets



Ergonomic Seating



Double Filtration

Clearwater Spas

SALES HANDBOOK |

Evergreen Series

GREAT VALUE & THERAPY



ES93L 2 pumps | 40 jets | 6 person
92.5" x 92.5" x 39.5"
Pumps: 2 therapy | 1 circulating



ES84L 2 pumps | 40 jets | 6 person
84" x 84" x 34"
Pumps: 2 therapy | 1 circulating



ES76L 2 pumps | 40 jets | 5 person
76" x 76" x 34"
Pumps: 2 therapy | 1 circulating



ES76CC 2 pumps | 40 jets | 4 person
76" x 76" x 40" x 34"
Pumps: 2 therapy | 1 circulating



ES93 2 pumps | 40 jets | 8 person
92.5" x 92.5" x 39.5"
Pumps: 2 therapy | 1 circulating



ES84 2 pumps | 40 jets | 7 person
84" x 84" x 34"
Pumps: 2 therapy | 1 circulating



ES76 2 pumps | 40 jets | 7 person
76" x 76" x 34"
Pumps: 2 therapy | 1 circulating



ES76R 2 pumps | 40 jets | 3 person
76" x 53" x 34"
Pumps: 2 therapy | 1 circulating



Water Features



DuraTech Cabinets



Push Button Control



Ergonomic Seating

Clearwater Spas

SALES HANDBOOK

Lite Series

GREAT VALUE & THERAPY



**93L
LITE**

1 pumps | 20 jets | 6 person
92.5" x 92.5" x 39.5"
Pumps: 1 therapy | 1 circulating



**84L
LITE**

1 pumps | 20 jets | 6 person
84" x 84" x 34"
Pumps: 1 therapy | 1 circulating



**76L
LITE**

1 pumps | 20 jets | 5 person
76" x 76" x 34"
Pumps: 1 therapy | 1 circulating



**93
LITE**

1 pumps | 20 jets | 7 person
92.5" x 92.5" x 39.5"
Pumps: 1 therapy | 1 circulating



**84
LITE**

1 pumps | 20 jets | 7 person
84" x 84" x 34"
Pumps: 1 therapy | 1 circulating



**76
LITE**

1 pumps | 20 jets | 7 person
76" x 76" x 34"
Pumps: 1 therapy | 1 circulating



**76R
LITE**

1 pumps | 20 jets | 3 person
76" x 53" x 34"
Pumps: 1 therapy | 1 circulating



**DuraTech
Cabinets**



**Push Button
Control**



**Hydrotherapy
Jets**

Clearwater Spas

SALES HANDBOOK |

Industry's Best Hot Tub Warranty

WE ARE PROUD TO PROVIDE THE BEST WARRANTY!

Compare for yourself and you will see we back the best hot tubs with the best warranty.



Structural warranty includes the shell, pillar supports, floor system and cabinet.



Equipment warranty includes the plumbing parts and operating equipment.

(Lite Series warranty*: 10 year structural / 2 year equipment)

(Europe warranty*: 10 year structural / 3 year equipment)

* Exclusions. We provide a one year warranty on the following items: cedar cabinets (does not include the surface color stain finish from fading), fuses, light bulbs, LED lighting, spa pillows, filter cartridges, ozonators, UVC system, salt system, music/audio/media system, Bluetooth system, speakers, subwoofer, Wi-Fi System, MicroSilk, Power-In-Motion Package. See spa manual or go to clearwaterspas.com for complete warranty details and more information.

Clearwater Spas

SALES HANDBOOK |

Best Practice Manufacturing



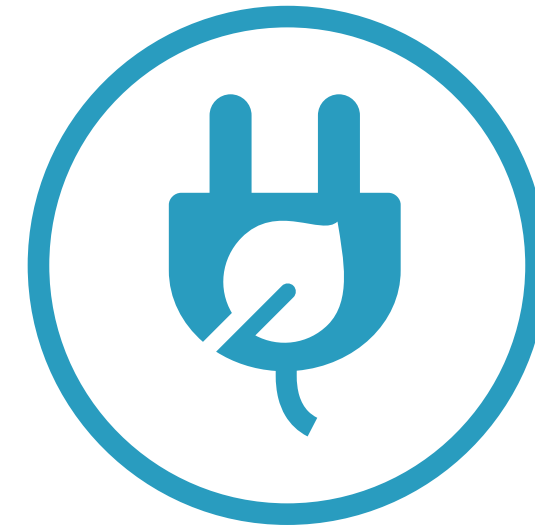
CLEAN WATER

Natural water filtration and purification solutions



CERTIFIED

Exceeds the standards of the California Energy Commission



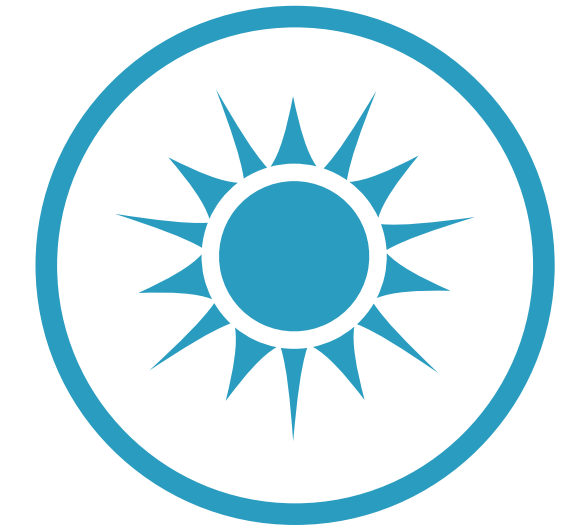
ENERGY EFFICIENT

RTB insulation saves energy, costs, recycles and reflects heat



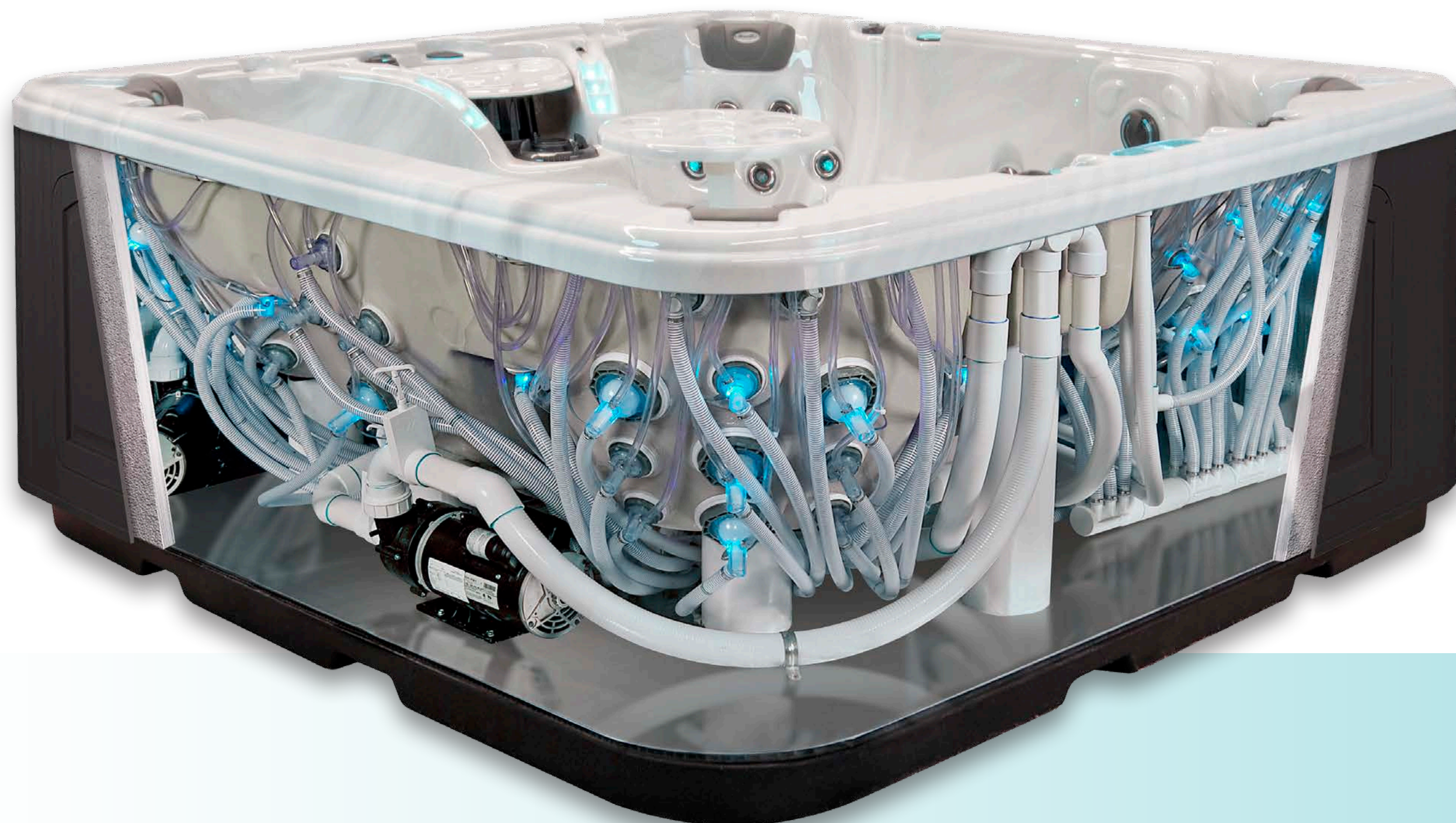
MANUFACTURING

Natural water filtration and purification solutions



CLEAN AIR

V.O.C.-free styrene-free clean air EcoSpray™ shell system



EXPERIENCE THE DIFFERENCE

Clearwater Spas

SALES HANDBOOK |